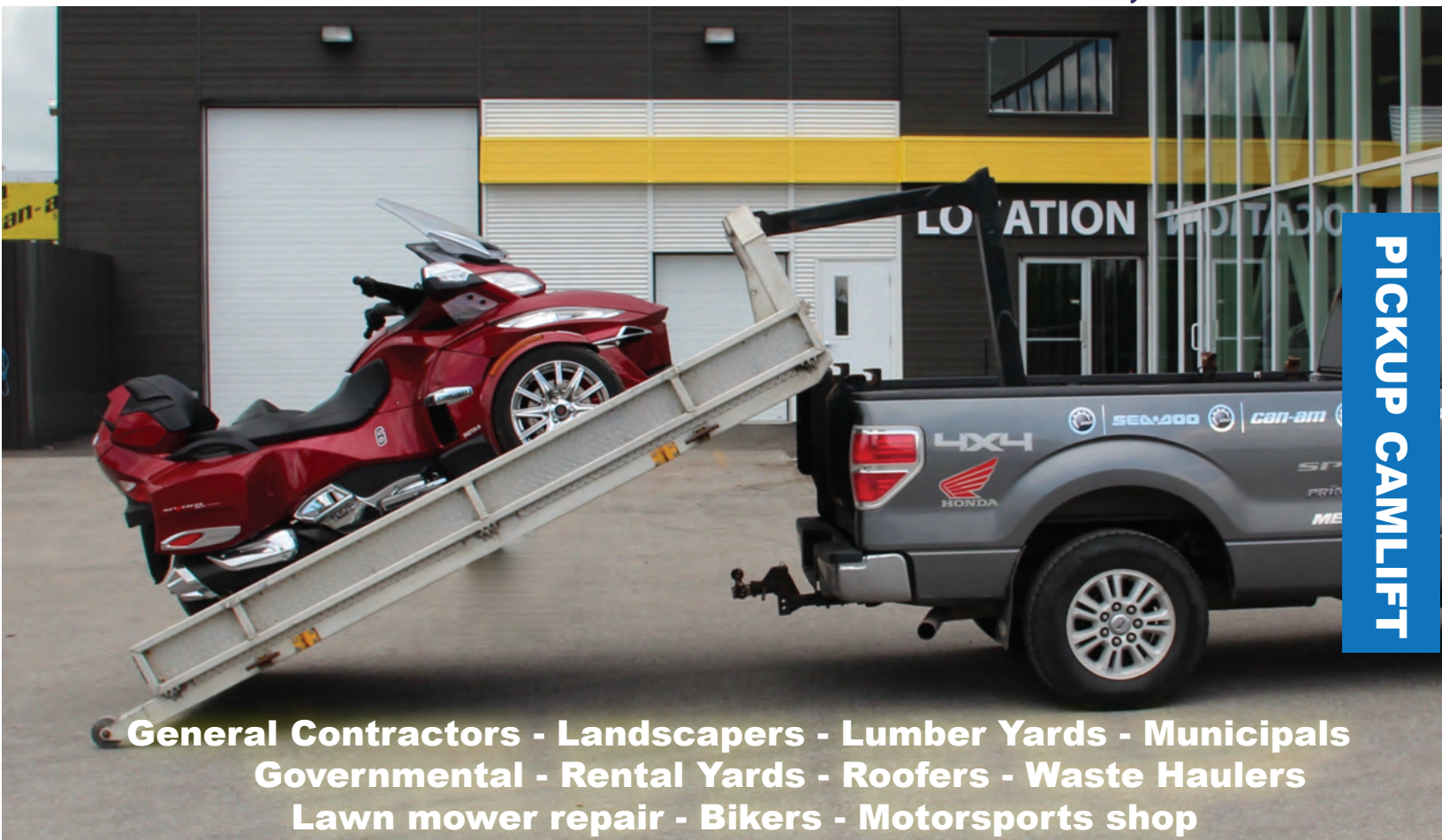


# CAMLIFT SERIES MINILIFT SYSTEM



**PICKUP  
CAMLIFT**

**General Contractors - Landscapers - Lumber Yards - Municipals  
Governmental - Rental Yards - Roofers - Waste Haulers  
Lawn mower repair - Bikers - Motorsports shop**

**Hooklift system with unlimited versatility**



**2,500, 3,800 or 6,000 Lift Capacity**

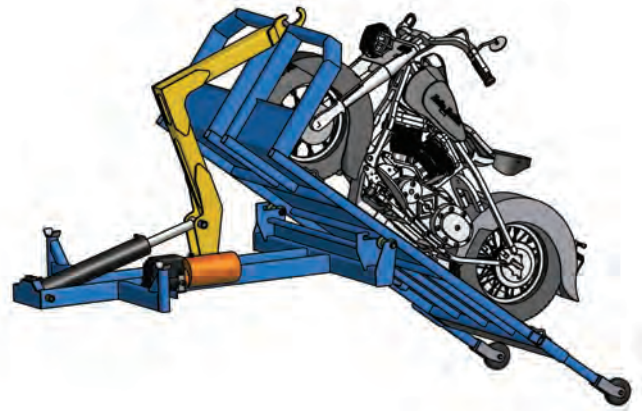
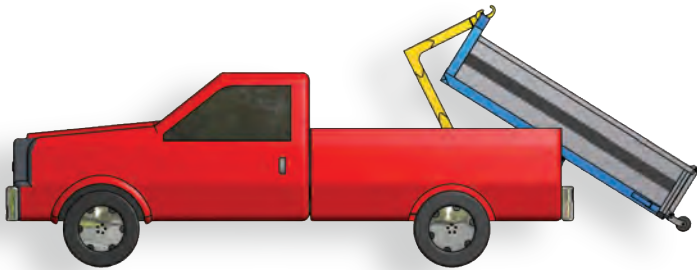
**Cam-Concept Inc. Canada**



**Cam-Concept USA, LLP**

# MINILIFT SYSTEM

CL-002 07/2017  
REV. 3



	ML2.5KIB-6.5FT	ML3.8K8IB-8FT	ML3.8K8OF-8FT	ML6K8IB-8FT	ML6K8OF-8FT
<b>Capacity</b>	2,500 lbs.	3800 lbs.	3800 lbs.	6,000 lbs.	6,000 lbs.
<b>Average Weight</b>	380lbs	452 lbs	452 lbs	550 lbs	550 lbs
<b>Lenght</b>	78"	96"	96"	96"	96"
<b>System Location</b>	In the Box (IB)	In the Box (IB)	On the frame (OF)	In the Box (IB)	On the frame (OF)
<b>Standard hook height options</b>	30"	30"	30"	30"	30"
<b>Truck Bed size</b>	6.5'	1"	8'	1"	8'
<b>Recommended Truck requirement</b>	F150 - RAM 1500 - GMC 1500 and +	F150 - RAM 1500 - GMC 1500 and +	F150 - RAM 1500 - GMC 1500 and +	F250 - RAM 2500 - GMC 2500 and +	F250 - RAM 2500 - GMC 2500 and +
<b>Recommended truck frame length</b>	6.5'	8' (work on 6')	8' (work on 6')	8' (work on 6')	8'
<b>Security</b>	Rear locking hook	Rear locking hook	Rear locking hook	Rear locking hook	Rear locking hook
<b>Hook hydraulic cylinder</b>	3" hydraulic cylinder	4" hydraulic cylinder	4" hydraulic cylinder	5" hydraulic cylinder	5" hydraulic cylinder
<b>Hydraulic power unit</b>	Electric motor 12 VDC - 3,3 cc / r (1,5KW-12V-210A)	Electric motor 12 VDC - 3,3 cc / r (1,5KW-12V-210A)	Electric motor 12 VDC - 3,3 cc / r (1,5KW-12V-210A)	Electric motor 12 VDC - 3,3 cc / r (1,5KW-12V-210A)	Electric motor 12 VDC - 3,3 cc / r (1,5KW-12V-210A)
<b>Wired remote control</b>	Included	Included	Included	Included	Connected to the truck battery
<b>Power: 12 volts</b>	Connected to the truck battery	Connected to the truck battery	Connected to the truck battery	Connected to the truck battery	9' Platform option
<b>Recommended Platform length</b>	7'	9'	9' or More	9'	9' or More
<b>Recommended Container length</b>	7'	9'	9' or More	9'	9' or More
<b>Wireless remote</b>	Option	Option	Option	Option	Option
<b>Extra 12 volts battery + Case</b>	Option	Option	Option	Option	Option



Cam-Concept Inc.  
137 Rue de la défense Nationale  
Saint-Raymond, G3L 4Y4, Qc, Canada  
Tél. : 418-987-8282  
Fax. : 866-919-1956  
Email: info@hooklifttrailer.com

Your authorized CAMLIFT dealer

Web : [www.hooklifttrailer.com](http://www.hooklifttrailer.com)

Cam-Concept USA, LLP.  
225 Glendale Ave. Suite: 1  
Sparks, Nevada 89431  
Tél. : 775-232-2489  
Fax. : 866-919-1956  
Email: jack@hooklifttrailer.com